



støvavsug
systemer

VACUUM SYSTEMS

 **SPANESI**



the strength of a body repair background



Spanesi's nøkkelord er kontinuerlig utvikling, noe som plasserer dem fremst i dagens bransje for verkstedsutstyr. Konkurransesevnen og profesjonaliteten har vært det grunnleggende i denne veksten.

Spanesi opererer i et moderne anlegg med et areal på 40.000kvm. dedikert til intern produksjon av over 80 % av sortimentet med høyteknologiske maskiner. Spanesi-organisasjonen, som i dag har 100 samarbeidspartnere, satellittfirma og filialer i mange deler av verden, dreier seg om en filosofi som opprinnelig tilhører grunnleggeren, men som likevel implementeres i hver eneste komponent: total kundetilfredshet.

Spanesi's keyword is constant development, rewarding Spanesi with a place at the forefront of today's repair shop equipment sector.

The concept of competitiveness and professionalism has been fundamental throughout this continual growth.

Spanesi operates in a modern facility boasting a surface area of 40.000 sq. m., (10.000 sq. m. covered) dedicated to the in-house production of over 80% of the range with high-tech machinery.

Spanesi organisation, today numbering over 100 collaborators, satellite companies and branches in many parts of the world, pivots on a philosophy originally belonging to the founder and, nonetheless, implemented by every single component: total customer satisfaction.



**SPANESI**

With spanesi systems it's easier to aim to order and efficiency

Spanesi avugsystemer er ikke bare i stand til å suge opp støv, men er også en installasjon som muliggjør alle funksjoner; som luft, strøm og integrert avsug.

Systemet analyseres og utformes med tanke på de spesifikke behovene til karosseriverkstedet, og løsningene Spanesi foreslår er uendelige.

Fra artikulerede armer, til festeposisjoner og fra sentraliserte systemer til veggturbin, kan systemet tilpasses.

Å ha utstyret innen rekkevidde, betyr at brukeren må anstrenge seg mindre og slipper å bruke unødvendig tid på å koble til plugger. Alle leveres med armer på 6,7 eller 8m. Som et resultat blir arbeidsplassen mer ryddig og ren (ikke flere kabler og rør på gulvet).

Systemene er designet ned til minste detalj, med tanke på industriell design, funksjonalitet og ergonomi. Av denne grunn er Spanesi den internasjonale lederen innen produksjon av støvavsugsystemer for karosseriverksteder.

Spanesi vacuum systems are able not only to suck up powder but also they are installation which allow the operator to have all the services such as air, current and suction.

The system is analysed and positioned keeping in mind the specific needs of the body shop and the solutions proposed by Spanesi are endless.

FROM ARTICULATED ARMS, TO FIXED POSITIONS and FROM CENTRALIZED SYSTEMS TO WALL TURBINE, the system can be personalized.

Having the equipment within reach, for the user means less efforts and not the time wasting to connect plugs. All is supplied with the arm of 6.7 m or 8 m.

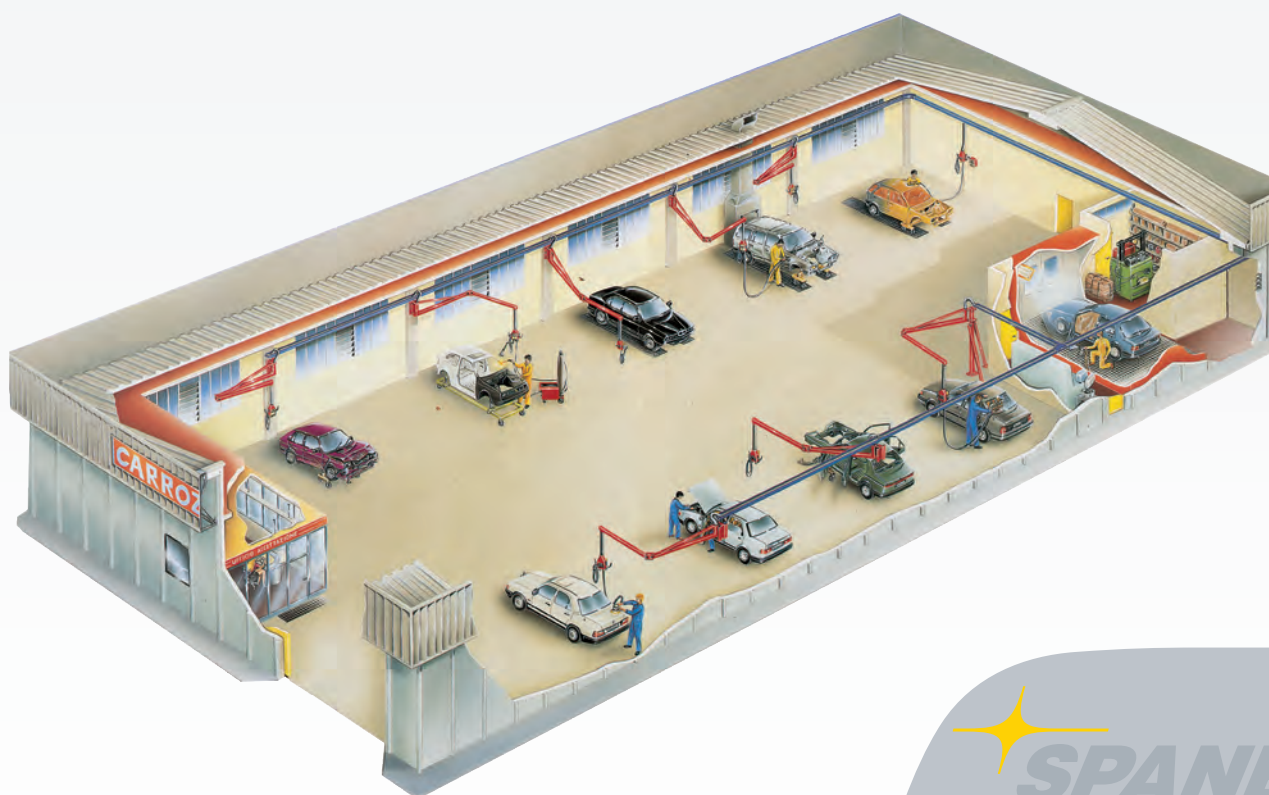
The environment results to be more tidy and clean (there are no more cables and tubes on the floor).

Systems are taken care with the slightest details, keeping in mind the industrial design, the functionality and the ergonomics.

For this reason, Spanesi is the international leader in manufacturing vacuum systems for body shops.

VACUUM SYSTEMS

Avsugssystemer / vacuum systems



SENTRALAVSUGSYSTEMER/ centralized vacuum systems

TYPHOON



3B

903B0101
400V 3F 50Hz 3KW

3B/S

903B0102
400V 3F 50Hz 3KW
lydisolert / sound proof



4B

904B0105
400V 3F 50Hz 5,5KW

4B/S

9034B0106
400V 3F 50Hz 5,5KW
lydisolert / sound proof



4BD

904BD105
400V 3F 50Hz 5,5+5,5KW

4BD/S

904BD106
400V 3F 50Hz 5,5+5,5KW
lydisolert / sound proof



3BT

904BT105
400V 3F 50Hz 5,5+5,5+5,5KW

4BT/S

904BT106
400V 3F 50Hz
5,5+5,5+5,5KW
lydisolert / sound proof

INVERTER



4B/S - PLUS

904B0506

400V 3F 50 Hz 7,5 KW
lydisolert / sound proof

Tekniske data / technical data

		3B - 3B/S	4B - 4B/S	4BD - 4BD/S	4BT - 4BT/S	4B/S - PLUS
Strøm	power	3 KW	5,5 KW	5,5+5,5 KW	5,5+5,5+5,5 KW	7,5 KW
Luftstrømningshastighet	air flow rate	300 m3/h	500 m3/h	500+500 m3/h	500+500 m3/h	620 m3/h
Filterstørrelse	filter surface area	0,57 m2	2,70 m2	2,70 m2	2,70 m2	2,70 m2
Vakuum	negative pressure	1600 mm H ₂ O	1600 mm H ₂ O	1600 mm H ₂ O	1600 mm H ₂ O	1600 mm H ₂ O
Motorer	motors	1	1	2	3	1
Høyde	height	1100 mm	1610 mm	1610 mm	1610 mm	1610 mm
Bredde	width	760 mm	760 mm	760 mm	760 mm	760 mm
Lengde	length	920 mm	920 mm	1400 mm	1880 mm	1050 mm
Vekt	weight	170 Kg	256 Kg	374 Kg	492 Kg	260 Kg

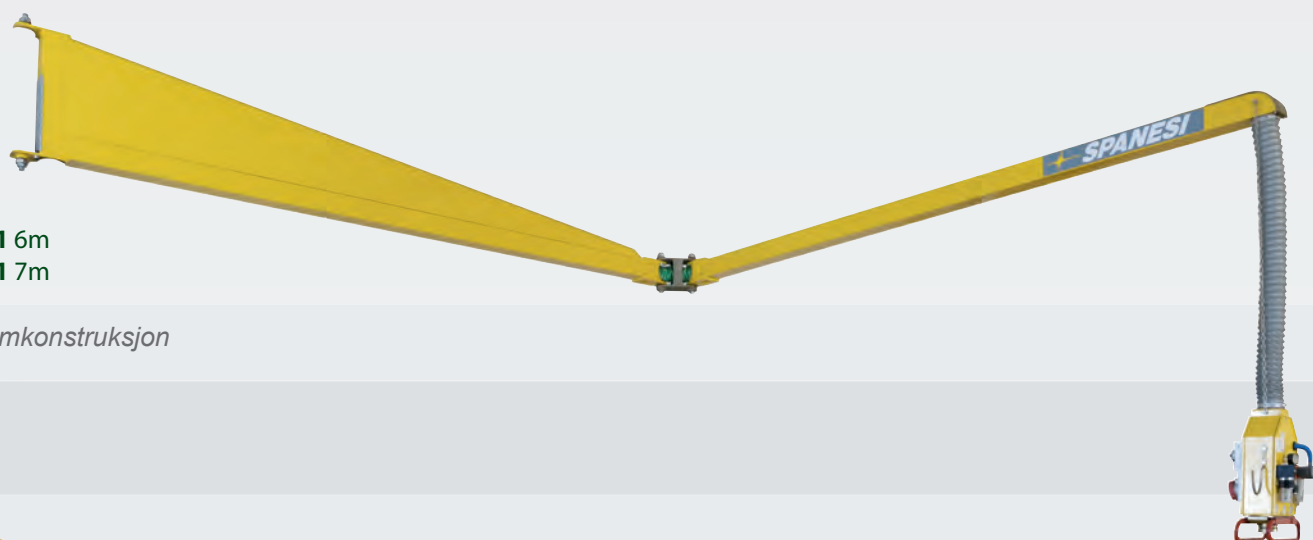
Verktøy som kan brukes sammen: antall kan variere, fordi det avhenger av utforming, plassering og lengde på rør. / **Tools that can be used together:** the number can change, because it depends on the conformation and length of the line of the extraction collector

Max rørlengde: for avsugsystemer med gruppe 4BD/4BT er det nødvendig at 20-30% av den første rørlengden er utført med Ø 110mm rør / **Maximum collector length:** for vacuum systems with groups 4BD / 4BT it is necessary that the 20%-30% of the extraction connector is done with tubes Ø 110 mm

PINOCCHIO

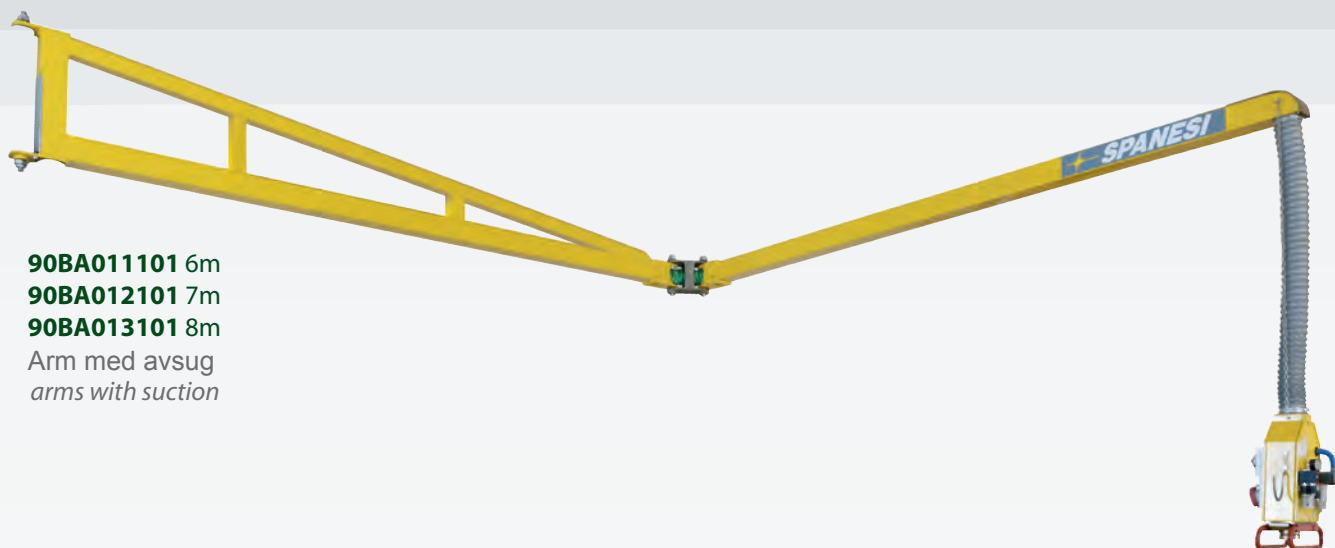
90BA211101 6m
90BA212101 7m

Tildekket armkonstruksjon



90BA011101 6m
90BA012101 7m
90BA013101 8m

*Arm med avsug
arms with suction*



Elektro-pnaumatiske kontrollbokser / electro-pneumatic control boxes

PITAGORA

MED AVSUG / with suction



90CEP11301
230 - 230 V
16A



90CEP12301
230 - 400 V
16A 4P



90CEP14301
230 - 230 V - 400 V 32A / 4P

UTEN AVSUG/ without suction



90CEE11301
230 - 230 V
16A



90CEE12301
230 - 400 V
16A 4P



90CEE14301
230 - 230 V - 400 V 32A / 4P

* Konsoll for
luftautomatikk
er ikke inkludert

* The
pneumatis group
is not included

ARCHIMEDE

MED AVSUG / with suction



90CEPM0101
230 - 230 V
16A

UTEN AVSUG / without suction



90CEPM0102
230 - 230 V
16A

* Konsoll for
luftautomatikk
er ikke inkludert

* The
pneumatis group
is not included

MED AVSUG / with suction



90CEPM0201
230V - 400V 16A 4P

UTEN AVSUG/ without suction



90CEPM0202
230V - 400V 16A 4P

* Konsoll for luftautomatikk er ikke inkludert

* The pneumatis group is not included



90KA01CE09

Vacuum group with 4 prevost- Spanesi connectors with safety (pressure discharge)

90KA01CE

Pneumatic device with no.04 ani connections

90KA01CE01

Pneumatic device with no.04 nitto connections

90KA01CE02

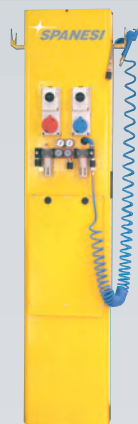
Pneumatic device with no.04 metal work connections

90KA01CE03

Pneumatic device with no.04 cejn connections

90KA01CE04

Pneumatic device with no.04 atlas (qic10) connections



90DISTR101
230 - 230 V 16A

90DISTR201
230 - 400 V 16A 4P

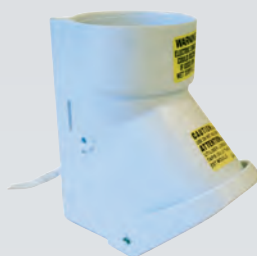
90DISTR102

*230 - 400 V 32A 4P
Veggfordeler med luft, strøm og avsgforsyning
Wall distributor with air, power and vacuum supply*

Kontrollbokser kun for avsgstyring / Special control boxes only suction



90C00126 Høyre/ Right - **90C00127** Venstre/ Left
Kontrollboks med avsgsåpning med mikrobryter
Control box with a suction opening with a micro-switch

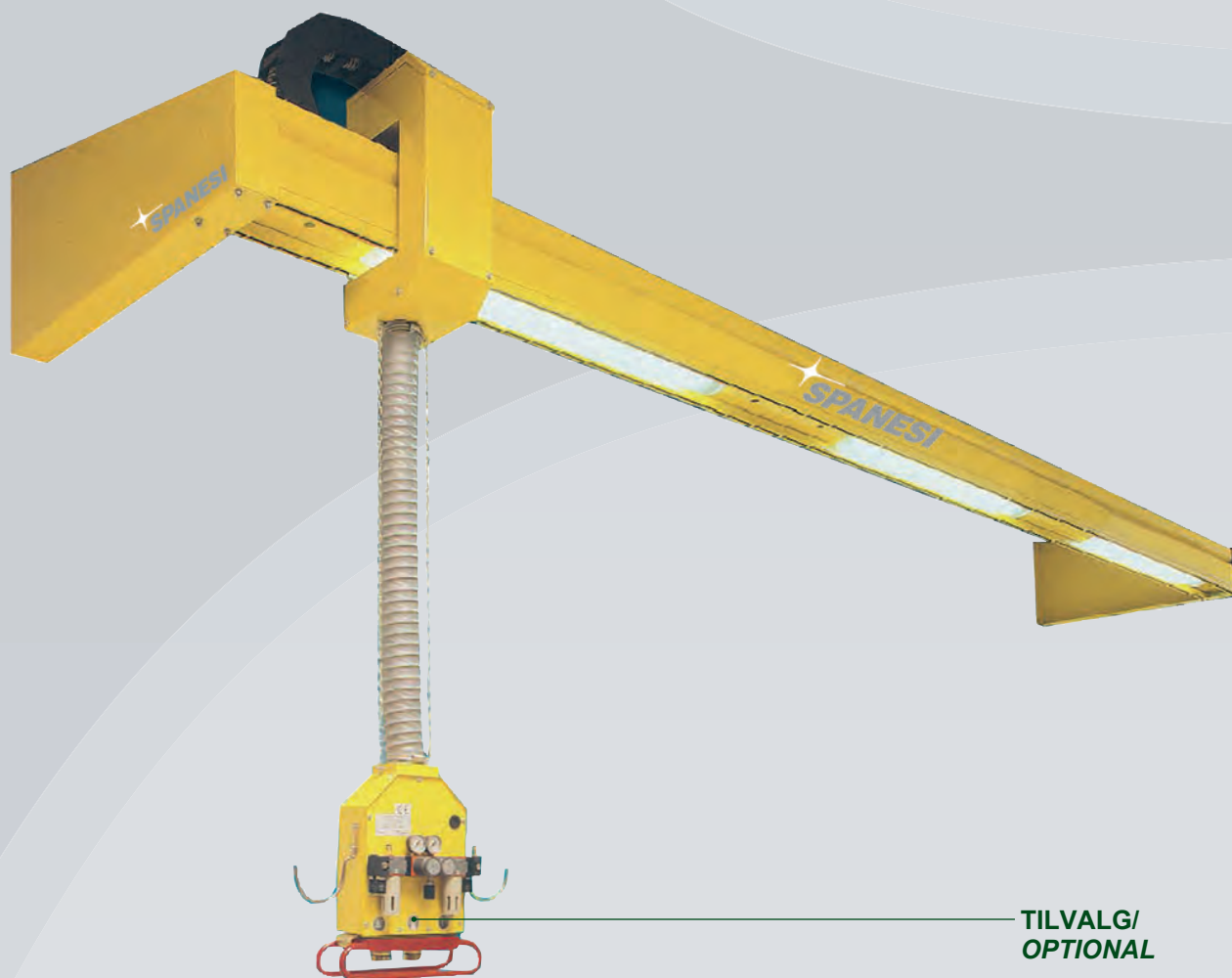


10SP000369
Enkel avsgsåpning i plast med mikrobryter / Plastic single suction opening with micro switch

COLUMBUS

GLIDELINJESETT / *sliding lines kit*

Columbus er et 6m langt glidesystem med luft, strøm og avsug/ Columbus is a 6 mt slideway system with air, power and suction



TILVALG/
OPTIONAL

90KSC106

Columbus 6 m / 6 mt Columbus

90KNEON010

Kit neon Columbus / Kit neon Columbus

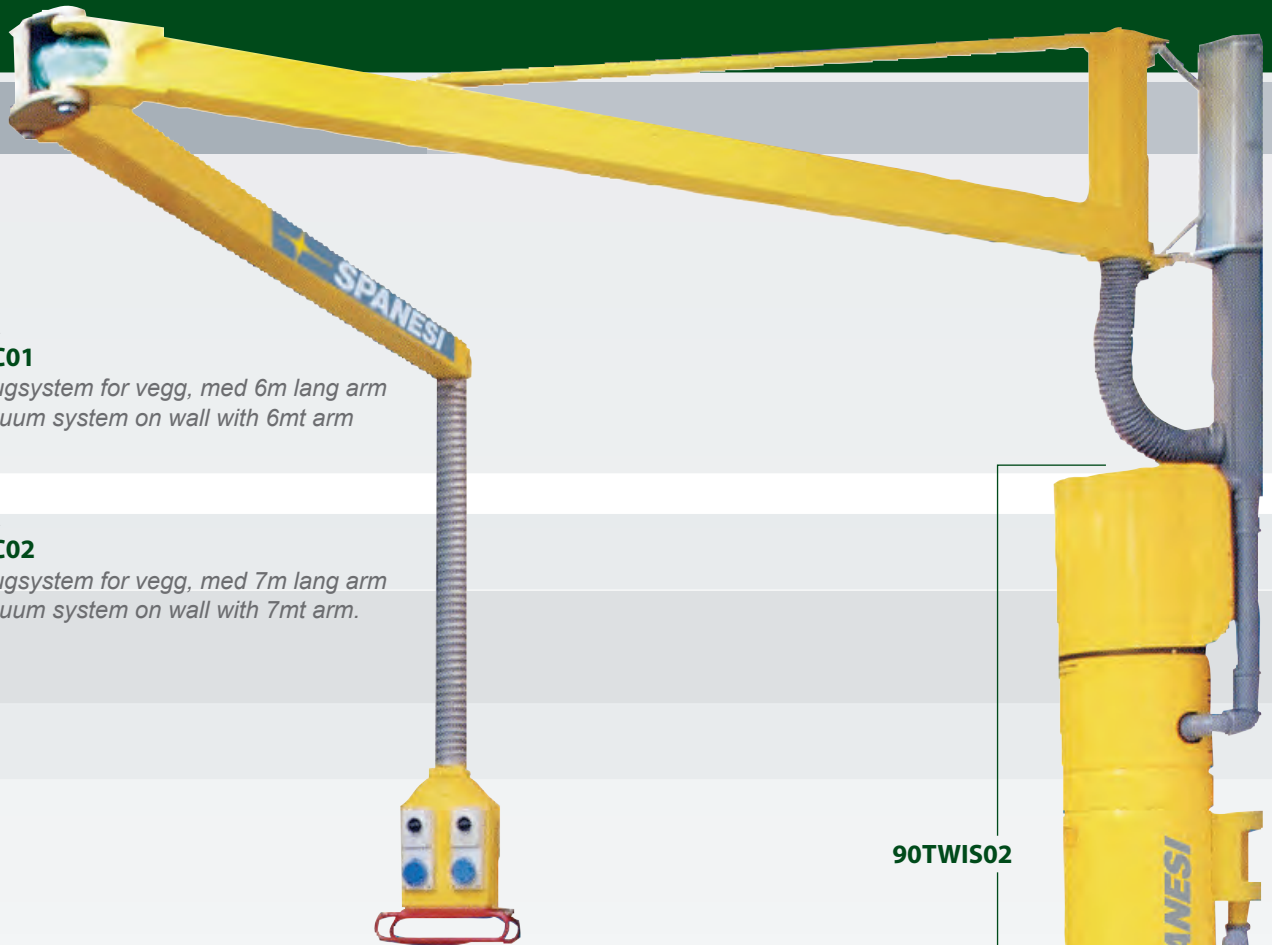
TWISTER

KIT TWISTER 90TWISDESC01

Komplett avsugsystem for vegg, med 6m lang arm
Complete vacuum system on wall with 6mt arm

KIT TWISTER 90TWISDESC02

Komplett avsugsystem for vegg, med 7m lang arm
Complete vacuum system on wall with 7mt arm.



90TWIS02

For karosseriarbeideren som ønsker en enkel løsning på støvavsug, tilbyr Spanesi en ny praktisk og rimelig løsning. Turbinen er produsert med pålitelige materialer, og filtre rengjøres automatisk. Tømmingen av støvoppsamler er det eneste vedlikeholdet som kreves, og det gjøres enkelt. Turbinen støtter elektro-pneumatisk sugemodul (230V-50-60Hz) og leddarm, som kan brukes i forskjellige lengder (6-7m)

To the carbody repairer that would like to solve the suction problem SPANESI proposes a new practical and cheap solution. The turbine is produced with reliable materials and filters are cleaned automatically. The emptying of powders is the only maintenance required and it is done comfortably. The turbine stokes the electro-pneumatic suction unit (230V – 50-60 Hz) and the articulated arm, that can be proposed in different lengths (6-7 m).

Strøm	power	90TWIS02 1,1 KWP
Lufthastighet	air flow rate	100 m3/h (a 127Kap)
Filteroverfalte	filter surface area	0,28 m2
Negativt trykk	negative pressure	1250 mm H ₂ O
Motorer	motors	1
Verktøy som kan brukes samtidig	tools that can be used together.	2
Høyde	height	1650 mm
Bredde	width	380 mm
Lengde	length	350 mm
Vekt	weight	50 Kg
Støynivå	noisiness	65 dbA

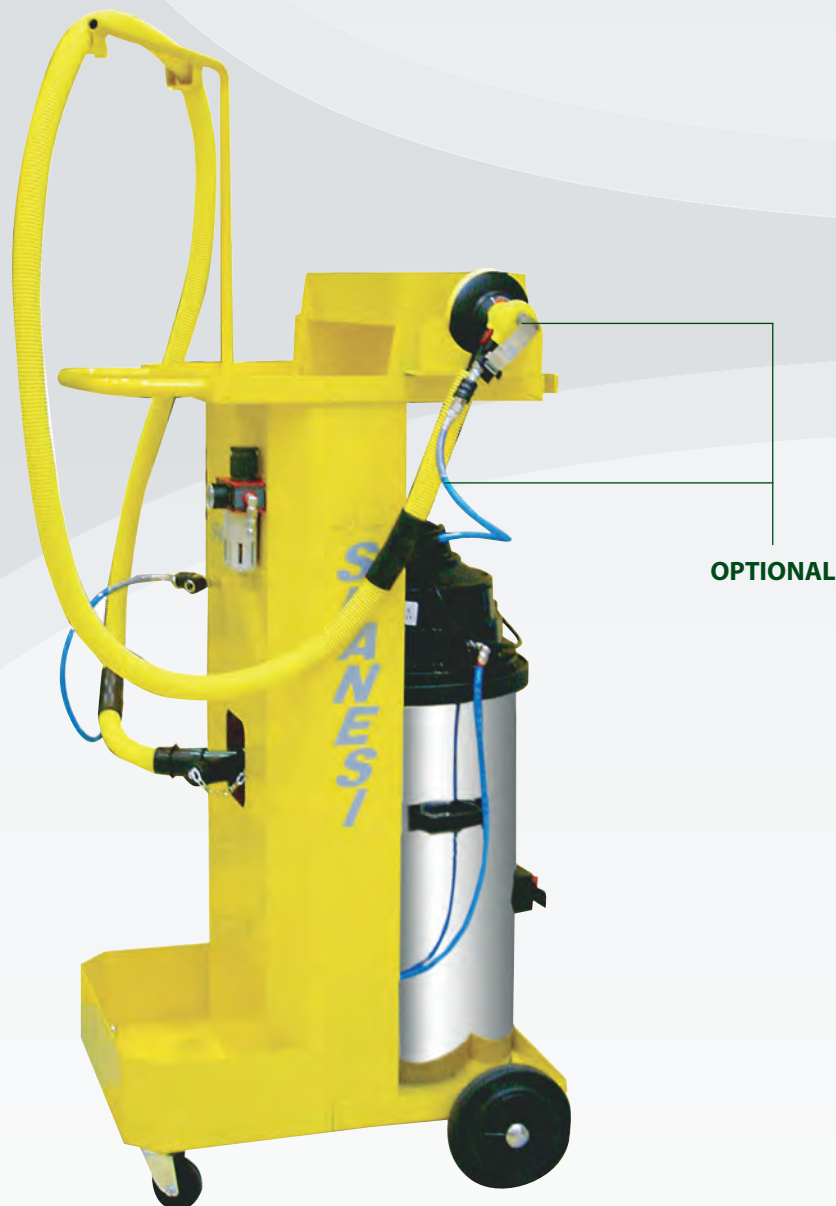
* Arm og elektropneumatisk kontrollpanel er ikke inkludert

* Arm and electro-pneumatic control box not included

Flyttbare avsugsystemer / suction mobile systems

Flyttbar pussestasjon med halvautomatisk rengjøring /
sandpapering mobilestation with semi-automatic cleaning

90CARRT010



Strøm	<i>power</i>	1000 + 1000W (n.02 motori)
Elektrisk spenning	<i>electric tension</i>	230V
Frekvens	<i>frequency</i>	50 / 60 Hz
Filterstørrelse	<i>filtering surface</i>	0,40 m ²
Verktøy som kan brukes samtidig	<i>tools that can be used simul.</i>	n.02 pneumatici (o 1 elettrico)
Bredde	<i>width</i>	651 mm
Høyde	<i>height</i>	1055 mm
Dybde	<i>depth</i>	738 mm
Vakuum	<i>negative pressure</i>	2380 mm H ₂ O
Luftmengde	<i>air capacity</i>	340 m ³ / h

TILBEHØR TIL AVSUGSYSTEMER */accessories for suction*

Avsug og pneumatisk rørkoblingstilbehør / Suction and pneumatic pipe fittings accessories



TILBEHØR FOR AVSUG / accessories for suction

/ flexible pipes and accessories



90SF035040 - 3,5m CEJN
90SF0119 - 5m CEJN
90SF0117 - 6m CEJN
90SF0218 - 8m CEJN
90SF100040 - 10m CEJN
90SF120040 - 12m CEJN
90SF150040 - 15m CEJN
90SF0114 - 3,5m ANI
90SF0113 - 5m ANI
90SF0115 - 6m ANI
90SF0118 - 8m ANI
90SF0116 - 10m ANI
90SF0214 - 3,5m NITTO
90SF0215 - 6m NITTO

Flexible air tube Ø 29



90SE0114 - 3,5m
90SE0115 - 6m
90SE0118 - 8m
90SE0116 - 10m

Flexible electric tube Ø 29



10064030

King buffer King 81x153



90SF0515 - 6m
90SF0518 - 8m

Flexible tube with nozzle



10064031

King buffer King 229x115



90SF0615 - 6m
90SF0618 - 8m

Flexible tube with nozzle



10064032

Lima buffer 70x420



90SF0050

Flexible tube Ø 20 3,5m for King and Lima buffer



90SF0715

Flexible tube Ø 40 6m without nozzle



10064015

PVC Coupling Ø 20/29 item 680240



10064016

Coupling for flexible pipe Ø 40 1-471 Virbel



10064017

Rubber coupling Ø 40/29



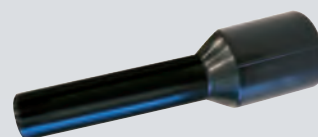
10064018

Rubber coupling Ø 29 item 660326



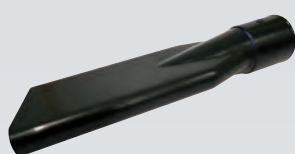
10064020

Rubber coupling Ø 29 mandasp



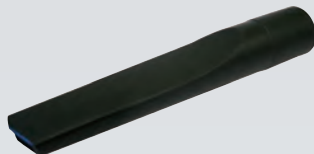
10064028

Reducing connector from Ø 40 to Ø 29 item 01-460



10064050

Nozzle Ø 40 item 01-432



10064054

Nozzle Ø 32 item 01-325



10064014

Long brush

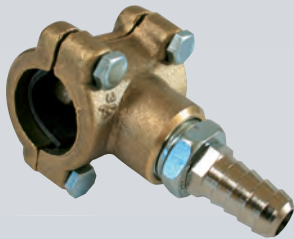


10064040

Brush Ø 32 item 01-323

AVSUG OG RØRKOBLINGSTILBEHØR / suction and pipe fittings accessories

/ Valve kits



60200740 3/8"
60200745 1/2"
60200750 3/4"
60200755 1"

Hydroblock with pipe holder



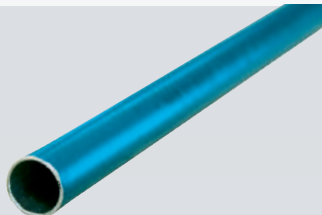
90KFILT010

*kit reducing filter for descent for vacuum system,
complete of 2 Ani air connections, manometer and
wall support*

RACCORDI / Fittings



10054330 Ø 15 pc 15 e
10054331 Ø 22 pc 22 e
Aluminium pipe supports



10051011 Ø 15x1 L=3000
10051012 Ø 22x1 L=3000
Aluminium pipe with Spanesi serigraphy



10063130 1/2"
10063100 1/4"
Standard f/m ball valve item 3392



10063102 1/4"
10063136 1/2"
Standard f/f ball valve item 3390

Avsug og rørkoblingstilbehør /suction and pipe fittings accessories

/fittings



10063132

M/F BALL VALVE WITH THROTTLE 3/4"



10063110 1/2"
10063114 3/4"

STANDARD F/F BALL VALVE WITH LEVER ITEM 3371



10063120 1"

STANDARD M/F BALL VALVE WITH LEVER ITEM 3373



10063200 M/F 3/4"-1/4" ART.241

10063202 M/F 1/2"-1/4" ART.241

10063204 M/F 3/4"-1/2" ART.241

10063206 M/F 1"-1/4"

10063207 M-1/8 F-1/4" (FILETTO L= 10MM)

10063208 M/F 1/2"-1/8" ART.241

10063210 M/F 1"-2-3/8" ART.241

10063212 M/F 3/4"-3/8" ART.241

10063214 M/F 3/8"-1/8" ART.241

10063218 M/F 3/8"x1/4"

REDUCING CONNECTOR

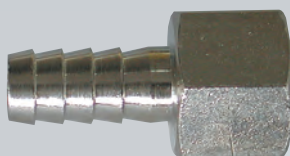


10036514 15-18MM

10036516 17-20MM

10036512 11-13MM

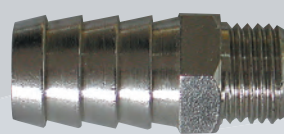
RING FOR SLEEVE



10060066 1/4"x9 F

10060067 1/4"x11 F

AIR PIPE COUPLING



10060072 1/4" x 14 M

10060075 1/4" x 9 M

10060079 1/8" x 6 M

10060080 1/8" x 9 M

10060082 1/2" x 14 M

10060083 1/2" x 16 M

AIR PIPE COUPLING



10063322 1/2"

10063340 1/4"

1/4" ADJUSTABLE NIPPLE 3 PZ 2060 1/4"

10060136 1/4" ART.2000

NIPPLE



10063300 MM 1/2x1/4

10063302 MM 1/4x1/8

10063304 MM 1/2x3/8

10063306 MM 3/8x1/8

10063308 MM 3/4x1/4

10063310 MM 3/8x1/4

10063312 MM 3/4x3/8

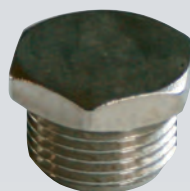
10063314 MM 3/4x1/2

REDUCED NIPPLE



10060144 1/4"

Coupling



10060170 1/4" TAPPO / PLUG

10060173 1/8"

PLUG 1/8" WITH OR AND CAVITY

PLUG



10060058 1/4F Ø 8x10 ART.1035

SPRING COUPLING



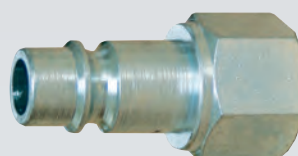
10060032 1/4" M
AH020801 mod.17/A Ani

Female-male socket



10060024 1/4" M

Male-male socket



10037351 15/A
Omni 1/4F Ani - Cejn

Rapid coupling



10060350 1/4" M BSPT Nitto

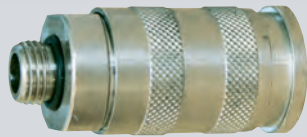
10060033 1/4" M BSPT Cejn

Rapid coupling



10060351 BSPT 1/4" M Nitto

Nipple



10060030 1/4" M 101 Metal Work

10060031 1/4" M 201/A Metal Work

Rapid coupling



10060400 1/4" M cod.QIC10AM08 Atlas

10060404 1/4" M cod.QIC08M08 Atlas

Rapid coupling



10060420 NIP10AM08 1/4" M Quic 10 Atlas

10060424 NIP08M08 1/4" M Quic 08 Atlas

Coupling

/ pipes



10061014

13x19 UL94 V2 blue

10061018

10x15,5 gray

10061017

16x26 black

Air pipe

10061019

Air pipe 8x12 blue presscord pu 20 bar



10061200

Ø 6- 8 with air fittings

10061206 Ø 8-10

Spirale Rilsan L=7,5 m

Rilsan spiral



10061262

7,5x10 C98SH Light blue

Elastolan Elastolan pipe



10061251

Ø 4x 6 light blue PA12

10061252

Ø 4x 6 white PA12

10061254

Ø 8x10 white PA11

Rilsan pipe



10060509 Ø 15x12

10070019 Ø 22x18

Rilsan Pipe



90SA0114 3,5M

90SA0115 6M

90SA0118 8M

90SA0119 9M

90SA0116 10M

90SA0117 12M

AIR PIPE WITH ANI CONNECTIONS



90SA0214 3,5M

90SA0215 6M

90SA0218 8M

90SA0219 9M

90SA0216 10M

90SA0217 12M

AIR PIPE WITH NITTO CONNECTIONS



SP753311

HOSE REEL FOR COMPRESSED AIR SIZE LENGTH 8M

AVSUG OG RØRKOBLINGSTILBEHØR / suction and pipe fittings accessories

/ Connectors



10070005 PM012216E Ø 22x3/4"
10070006 PM011514E Ø 15x1/2"
10069998 PM010812E Ø 8x1/4"
10069999 PM010612E Ø 6x1/4"
10070001 PM011012E Ø 10x1/4"

Connector terminal straight



10070002 PM0210E Ø 10
10070023 PM0206E Ø 6
10070007 PM0215E Ø 15
10070008 PM0222E Ø 22

"T" Connector



10070009 PM0315E Ø 15
10070010 PM0322E Ø 22
10070003 PM0310E Ø 10
10070025 PM0306E Ø 6
10070026 PM0308E Ø 8

90° Elbow connector



10070021 PM0406E Ø 6
10070022 PM0410E Ø 10
10070011 PM0415E Ø 15
10070012 PM0422E Ø 22

Intermediary straight connector



10070013 PM051012E Ø 10x1/4"
10070014 PM051514E Ø 15x1/2"
10070028 PM050812E Ø 8x1/4"
10070029 PM050612E Ø 6x1/4"
10070030 PM052214E Ø 22x1/2"
10070031 PM052216E Ø 22x3/4"

Connector



10070015 PM061510E Ø 15-10
10070016 PM062215E Ø 22-15

Reducing connector

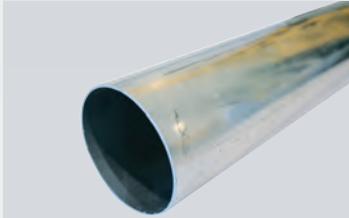


10070017 PM3022AE Ø 22-15

Reduced union "T"

TILBEHØR TIL AVSUGSYSTEM /vacuum systems accessories

/ Connectors



10051010 Ø 50x1,5mm L=3000
10051020 Ø 75x1,5mm
 PR23827/A L=3000
10051030 Ø 110x1,5 L=3000

Aluminium pipe



10050012 Ø 50 L=3,0m
10050018 Ø 75 L=3,0m
10050028 Ø 110 L=3,0m

Nitar pipe HTGL



10050100 Ø 50
10050104 Ø 75
10050108 Ø 110

HTU coupling



10050150 Ø 50/45°
10050156 Ø 50/87°
10050162 Ø 75/30°
10050166 Ø 75/45°
10050174 Ø 75/87°
10050180 Ø 110/30°
10050186 Ø 110/45°
10050196 Ø 110/87°
HTB bend



10050286 Ø 50/45°
10050290 Ø 75/45°
10050292 Ø 75/87°
10050298 Ø 110/45°

HTEA y-branch



10050450 Ø 75/50 45°
10050452 Ø 75/50 87°

HTEA reduced y-branch



10050396 Ø 50/40°
10050400 Ø 75/50°
10050416 Ø 110/75°

HTR reducing connector



10050340 Ø 50
10050344 Ø 75

HTM closing plug



10036001 Ø 75-110mm
10036006 Ø 50-40-30mm
10036010 Ø 125-150mm

PVC collar

TILBEHØR TIL AVSUGSYSTEM */vacuum systems accessories*

/ Blowers



SP716211 1/4"

Long plastic Blower



SP716201 1/4"

Short metallic blower

/ Air sanders



SP767031 5,0mm

Palm sander



SP767032 2,5mm

Palm sander

/ Sockets



10054901 400V 3 p+neutral+ground 16A – Ilme SQV 1665.5

10054960 230V 2 p+ground 16 A – Ilme SQV 1663.5

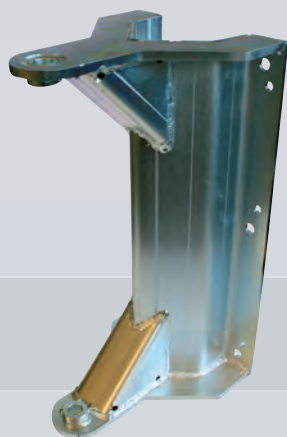
10054961 400V 3 p+ground 16 A – Ilme SQV 1664.5

10054962 400V 3 p+ground 32 A – Ilme SQV 3264.5

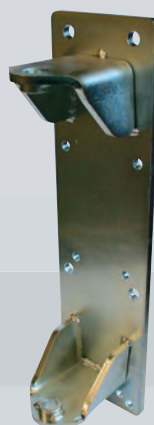
10054963 400V 3 p+neutral+ground 32 A – Ilme SQV 3265.5

SQV socket

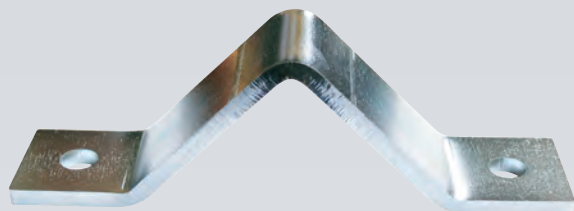
/Fixing plates



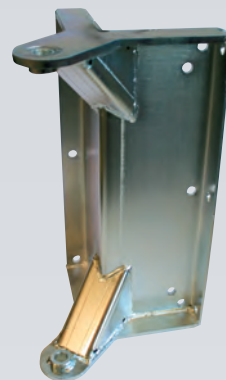
90204655
Special plate to fix on wall



90200965
Special plate to fix on wall



65100240
Counter-plate for plate on wall only for the installation on column 100x100mm



90200380
Plate for angular fixture



90205885
Special wall plate for 8 m arm

/ accessories for suction



90200875
Plate to weld on the column



90FB0010
Adjustable device to block the arms



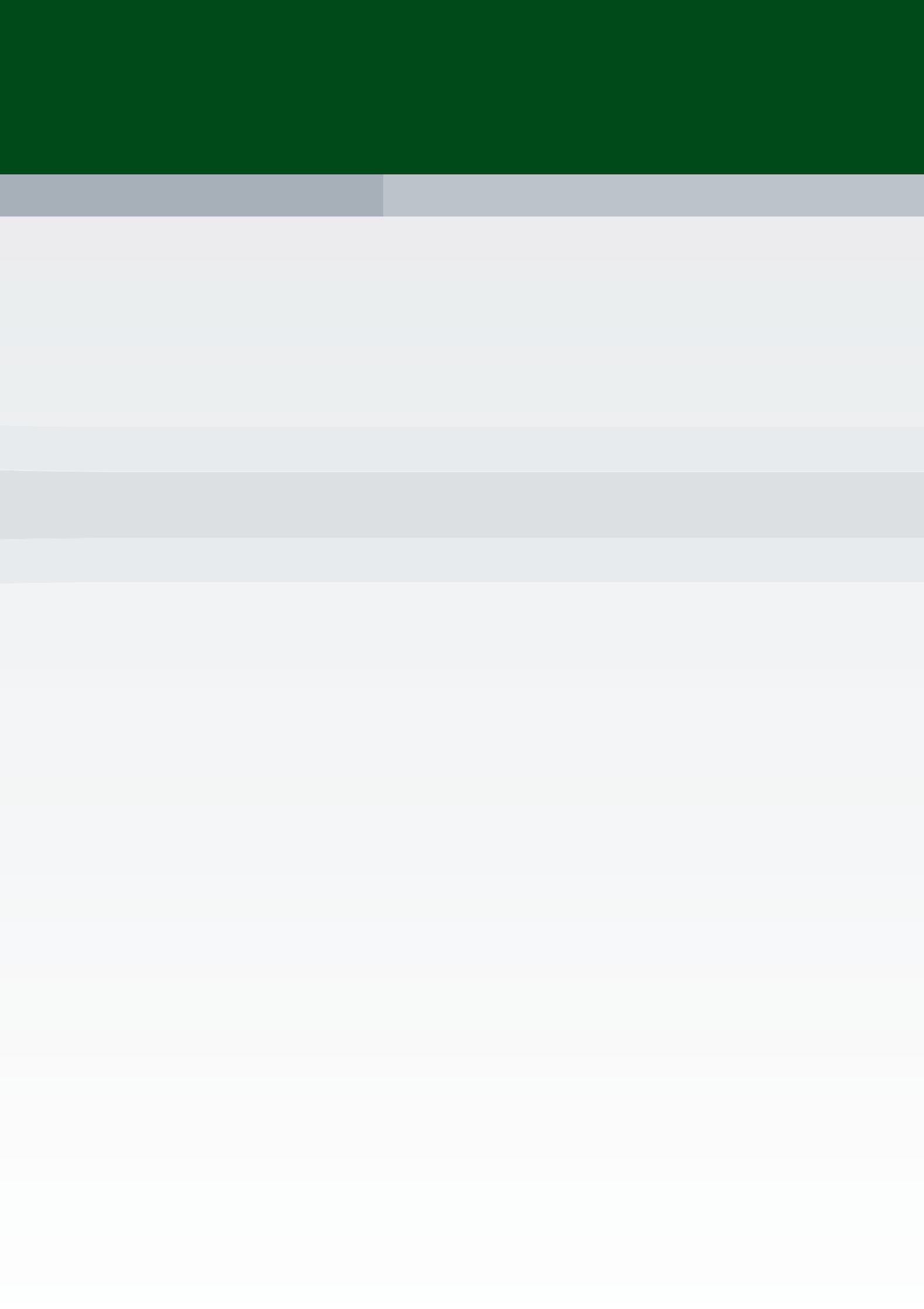
65100583
Plate 100x100 mm for the installation on wall with threaded bars



90SCATD010
Derivation box for cables and tubes for articulated arm



90SF0350
Special column at floor, height 3,50 m





Spanesi is in the following countries: Australia, Austria, Bahrain, Belgium, Brazil, Bulgaria, Chile, China, Colombia, Croatia, Czech Republic, Ecuador, Egypt, Finland, France, Germany, Greece, Holland, Hungary, India, Iraq, Ireland, Italy, Japan, Jordan, Kuwait, Latvia, Lebanon, Libya, Lithuania, Malaysia, Morocco, New Zealand, Norway, Oman, Poland, Portugal, Qatar, Romania, Russia, Saudi Arabia, Slovakia, Slovenia, South Africa, South Korea, Spain, Sweden, Switzerland, Syria, Thailand, Tunisia, Ukraine, United Arab Emirates, United Kingdom, Venezuela, U.S.A. (Arizona, California, Carolinas & Mid Atlantic, Florida & Caribbean, Great Lakes, Hawaii, Michigan & Upper Indiana, Midwest, Nevada, North Texas & New Mexico, Northeast, Ontario, Quebec & Atlantic Provinces, Rocky Mountain States, South Central, Southern and Central Texas, Upper Midwest).

Spanesi S.p.A. - via Praarie, 56/II
35010 Cavino di S. Giorgio delle Pertiche (PD) I
Tel. +39 049 9333211
www.spanesi.com